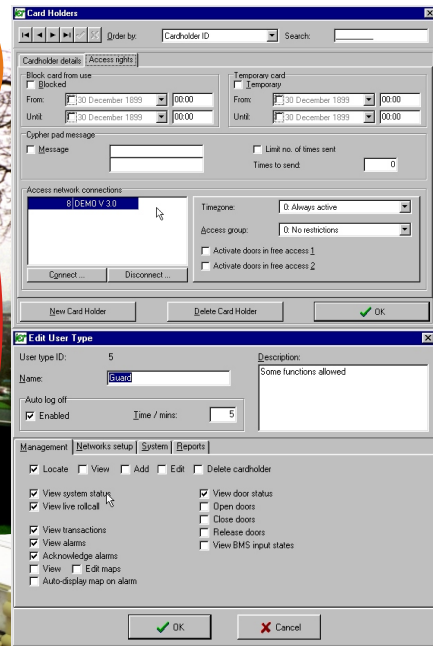




WINTACS

Central control software package
for
Tower and Integra Access Systems



- ▶ **MULTI NETWORK FOR TOWER AND INTEGRA**
- ▶ **REAL TIME DISPLAY OF ALARMS AND**
- ▶ **TRACKS USER ACTIONS, ALARMS, TRANSACTIONS**
- ▶ **CONTROLS & MONITORS BUILDING MANAGEMENT**
- ▶ **FULLY INTEGRATED CARD PRINTING OPTION**
- ▶ **DIAL UP SUPPORT MODULE OPTION FOR REMOTE SITES**
- ▶ **ALARM TRIGGERED FLOOR PLAN OPTION**
- ▶ **TEMPORARY, BLOCKED AND BANNED CARD**
- ▶ **AUTOMATIC ROLL CALL BY AREA**
- ▶ **EUROPEAN WORKING TIME DIRECTIVE INCLUDED**

Wintacs software is written to work exclusively with the IET Tower and Integra Access control Systems. The Wintacs program provides the system manager with an easy to use powerful tool to manage both Access Control and Building Management from one package.

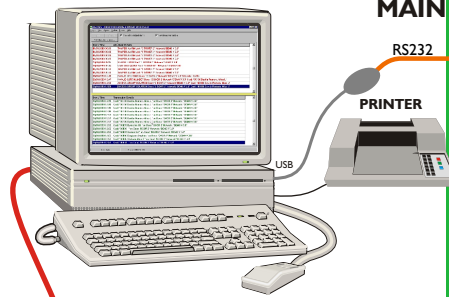
Wintacs can be easily added to existing Tower and Integra systems to provide on-screen card transaction, alarm control and monitoring. Existing DOS based TOWMAN access control and time and attendance software databases can be converted to the Paradox data base engine used by Wintacs.

Wintacs includes all of the facilities you have come to expect in an Access Control program:-

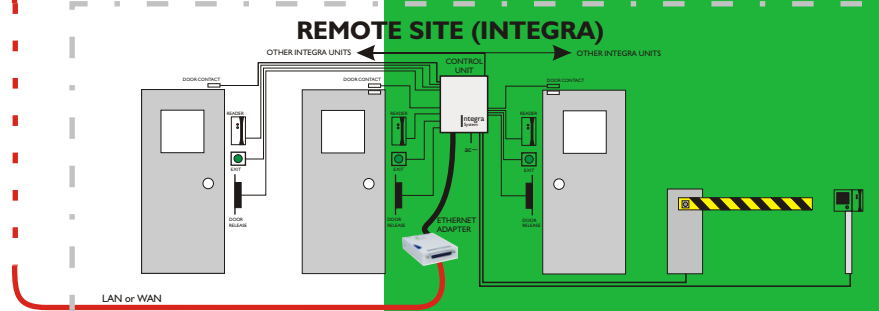
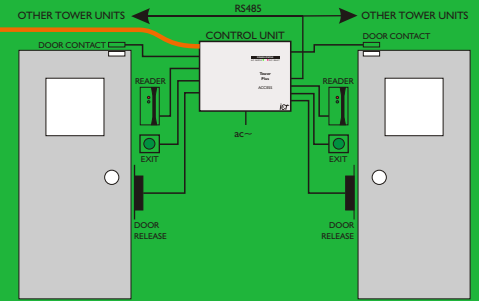
- * Extensive reporting facilities with programmable filters for cardholders, alarms, transactions, operator actions and rollcall.
- * Cardholder messaging facility sends messages from the operator to individual cardholders via LCD keypads on the system.
- * The EU Working Time Directive function outputs text files containing minutes worked for inclusion in any spreadsheet. An exceptions file containing errors such as *clocked in overnight* or *clocked IN twice without an OUT in between*. Doors can be set as badging points only or used for Access Control or both.
- * Alarm grouping facility groups alarms generated from BMS units and user defined alarms from the Access Control Units so that they can be timezone controlled.
- * Comprehensive data base files allow creation of your own fields for your specific application.
- * Predefined operator types can be set to restrict control or monitoring functions for different operators.

MAIN FUNCTIONS

- * Card issue and card holder information
- * Door setup and control
- * Network monitoring and configuration
- * Operator, card usage and alarm logging
- * Timezone configuration
- * Roll call - may be triggered by specified alarms for a particular area.
- * Database - Archiving and backup
- * Audit trails
- * Alarm filtering
- * Password control
- * Temporary cards - time and date selectable
- * Timezone control
- * User profiles
- * Free access doors
- * Blocked cards, banned cards
- * Alarm links
- * Report generator and filters (by door, card holder, time etc).
- * User definable card database fields with search facility
- * Communication quality status for PC and access control network (Integra only)



MAIN SITE (TOWER)



OPTIONAL MODULES

- * **BMS CONTROL** - Includes lift functions (15 floors per BMS up to 60 floors maximum), Displays input states and related alarms. Groups alarm inputs for automatic timezone control. Sets up output relays for access / door groups and type (stable, monostable, astable, bistable and sense).
- * **FLOOR PLANS** - built-in designer which allows import of JPEG or DXF files and icon design. Automatic display with animated icons.
- * **DIAL-UP MODEM SUPPORT** - provides user definable dialing strings for remote sites.
- * **CARD PRINTING** - fully integrated to allow simultaneous direct printing and addition to system. Magnetic stripe encoding on tracks 1, 2 or 3 (track 2 recommended). Includes card designer for the various types required - eg visitors, contractors, employees etc. TWAIN compliant picture and signature capture.

OPERATING SYSTEM

Microsoft Windows 2000 or XP.

MINIMUM COMPUTER REQUIREMENTS

For Access control only :-

Intel Pentium or AMD 486 - 66 with 16 Mb RAM, 1 Gb Hard Drive

For Floor Plans and or card printing :-

Intel Pentium II or AMD K6 - 2 with 32 Mb RAM, 4 Gb Hard Drive

CONNECTION TO ACCESS SYSTEM

- 1) Via USB software dongle supplied with integrated RS232 converter.
- 2) Via old style com port RS232 dongle.
- 3) Via Ethernet adapter (IP addressable) available from IET.
- 4) Via dial-up modem.

SOFTWARE MAINTAINANCE

Regular upgrades are available from IET.

A database repair facility is included with the software for restoring the system in the event of a partial corruption caused by the disk operating system.

EVALUATION CD's

Evaluation CD's are available free of charge from IET on request.



iET

For further information please contact our technical advisors

Innovative Electronic Technology Limited

IET House, Chestnut Close
Potten End, Herts HP4 2RN

Telephone: 01442 878 777

Facsimile: 01442 878 778

Email: Sales@ietgroup.com

Web site www.ietgroup.com